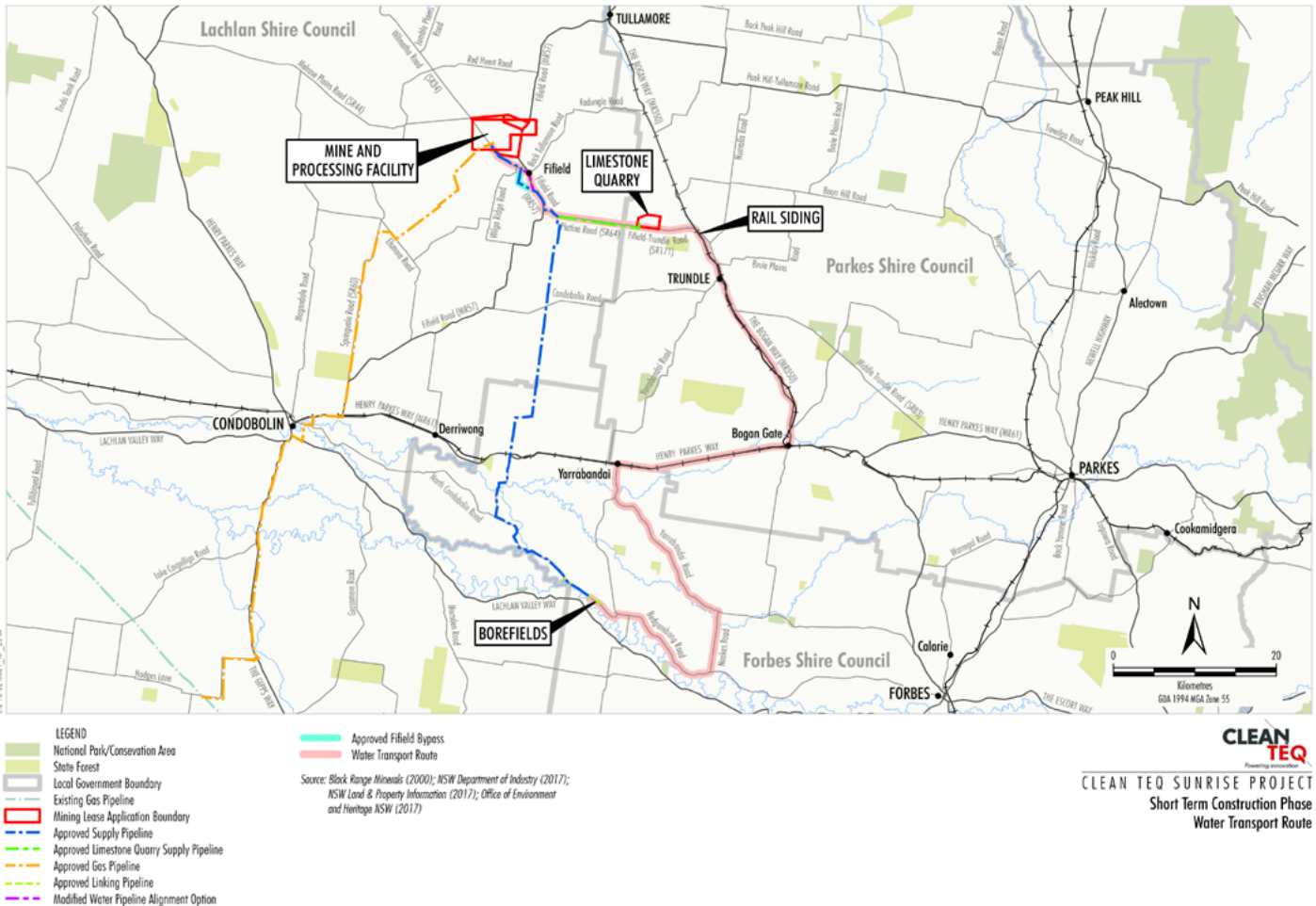


# ROAD TRANSPORT HANDOUT



## MODIFICATION 4

The approved Project would include road traffic generation associated with the workforce, deliveries (including sulphur and limestone) and product transport.

The key potential road transport impacts of the Modification would be associated with:

- changes to process input and product road transport requirements (e.g. increased sulphur and limestone);
- sourcing of up to approximately 560,000 tpa of the required limestone from third party suppliers;
- limited heavy vehicle use of The McGrane Way; and
- short-term road transport of water from the borefield to the mine site during the construction phase.

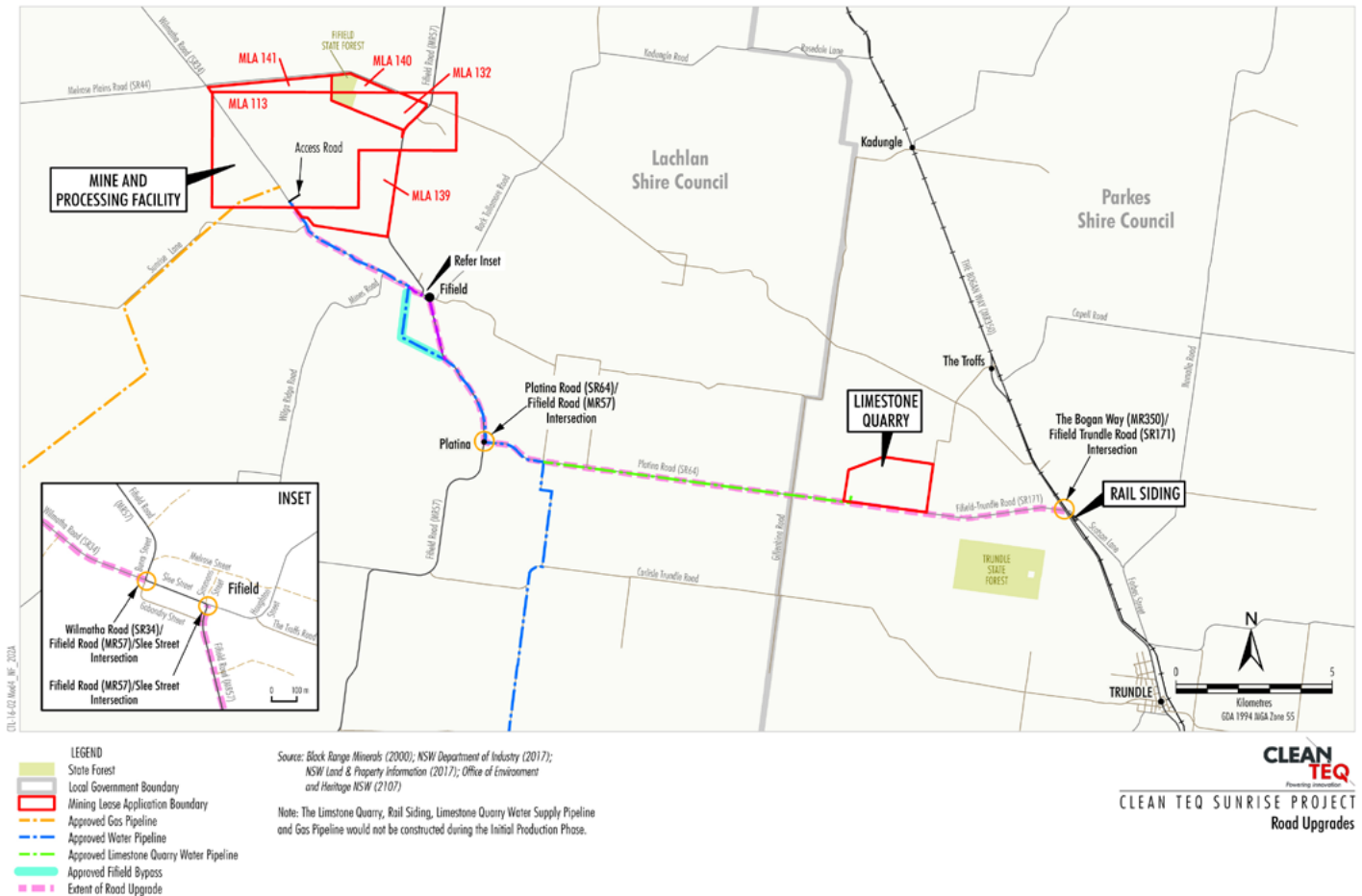
## ROAD TRANSPORT ASSESSMENT

### Assessment Methodology

The Road Transport Assessment for the Modification was undertaken by GTA Consultants in accordance with *the Guide to Traffic Generating Developments*.

The existing road network has been characterised via site inspections and collation of traffic survey and road safety data.

The modified Project traffic generation has been estimated and then added to the existing road network to assess future total traffic generation, roadway capacity and safety impacts.



### Road Upgrades and Road Maintenance

The route between the rail siding and the mine site (including intersections) would be upgraded prior to the commissioning of the mine (refer to plan):

The Henry Parkes Way/Middle Trundle Road and Henry Parkes Way/The Bogan Way intersections would be upgraded prior to commissioning of the mine.

Additional road upgrades may be required prior to the commissioning of the limestone quarry and/or rail siding.

Clean TeQ would contribute funding to the maintenance of key roads in the Project area via Voluntary Planning Agreements with the local councils.

### Key Conclusions

- Good operating conditions (Level of Service B) are forecast on the road network around the Project.
- No capacity concerns regarding the operation of key intersections are expected for the Project.
- No significant impacts on the safety of the road network with implementation of road upgrades and management measures.
- The potential impacts of the short-term road transport of water would be well within the capacity of the existing roads and it would not exacerbate any existing safety concerns along the route.
- No significant impacts on the performance, capacity, efficiency and safety of The McGrane Way.

### TRAFFIC MANAGEMENT PLAN

A Traffic Management Plan would be developed in consultation with the Roads and Maritime Services and local councils for the modified Project.